

## Authority on Demand

Example of User Profile Swap setting

Author Stephen Cheney SCRC Secure Solutions bv

Scenario:

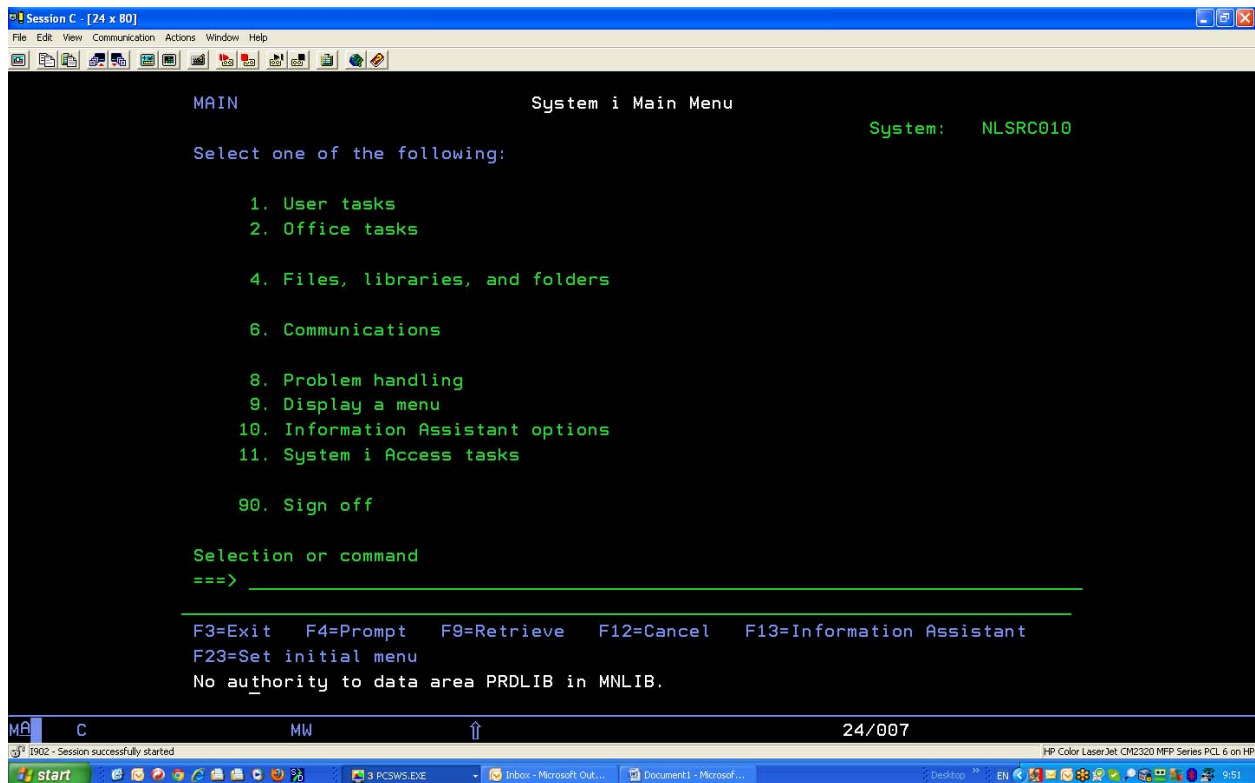
TESTUSER4 is a user with low authority –user class \*USER and no rights to access the application iMenu400.

TESTUSER4 is required to sign on to the system at the weekend and access the application iMENU400.

The application iMenu400 will only work with registered users. It recognizes the user name and once the user has started the application will grant the user access to the applications depending on settings.

TESTUSER4 is NOT registered in iMenu400 – so he must ‘become’ another user in order to gain access.

What normally happens when TESTUSER tries to enter iMenu400



```
Session C - [24 x 80]
File Edit View Communication Actions Window Help
MAIN                               System i Main Menu                               System:  NLSRC010
Select one of the following:
1. User tasks
2. Office tasks
4. Files, libraries, and folders
6. Communications
8. Problem handling
9. Display a menu
10. Information Assistant options
11. System i Access tasks
90. Sign off
Selection or command
==> _____
F3=Exit  F4=Prompt  F9=Retrieve  F12=Cancel  F13=Information Assistant
F23=Set initial menu
No authority to data area PRDLIB in MNLIB.
```

So we set up a SWAP rule in Authority on Demand

```
Session C - [24 x 80]
File Edit View Communication Actions Window Help
Screen 1/2          Modify Authority Rules

Type choices, press Enter.

Requesting user . . . . . TESTUSER4  If *GRPPRF, accept for its members . N
Authority provider . . . . . QSECOFR
Rule title . . . . . Allow access to application
PIN Code . . . . . _____ Remaining uses of PIN 99 99=*NOMAX
Provide authority by . . . . . 2 1=Add provider's authority*SPCAUT
                                2=Swap to Providers profile
                                3=Add provider's *SPCAUT
                                0=*NOMAX
Maximum work time . . . . . 60 0=Allow consecutive uses
Allow next use after . . . . . 0
                                N=Not
IP Address . . . . . _____ Subnet mask: _____
Time group (week schedule) . . . . . _____
Activity must begin . . . . . From: 1/01/01 0:00 To: 31/12/99 23:59

Send message to MsgQ . . . . . *PROVIDER
To E-mail (mail,mail...) . . . . . *PROVIDER

Last used by: TESTUSER4 13/10/04 9:28 Job: PCWSC1/TESTUSER4/273103
F3=Exit F4=Prompt F12=Cancel
Last update was done by QSECOFR (*NEW-RULE), at 04/10/13 09:28:00.

MA C MW ↑ 05/079
1902 - Session successfully started
start PCSWS.EXE Inbo... Microsoft Out... Document1 - Microsof... Desktop EN 9:52
HP Color LaserJet CM2320 MFP Series PCL 6 on HP
```

When TESTUSER4 accesses GETAOD the user becomes QSECOFR for the duration of the exercise.

NOTE : This is logged!

```
Session C - [24 x 80]
File Edit View Communication Actions Window Help
MAIN                               System i Main Menu                               System:  NLSRC010

Select one of the following:

    1. User tasks
    2. Office tasks

    4. Files, libraries, and folders

    6. Communications

    8. Problem handling
    9. Display a menu
   10. Information Assistant options
   11. System i Access tasks

   90. Sign off

Selection or command
===> _____

F3=Exit  F4=Prompt  F9=Retrieve  F12=Cancel  F13=Information Assistant
F23=Set initial menu
User TESTUSER4 has QSECOFR authorities following swap procedure.

MA  C                               MW                               ↑                               24/007
```

```
Session C - [24 x 80]
File Edit View Communication Actions Window Help

Display Job Status Attributes                               System:  NLSRC010

Job:  PCWSC1      User:  TESTUSER4      Number:  273126

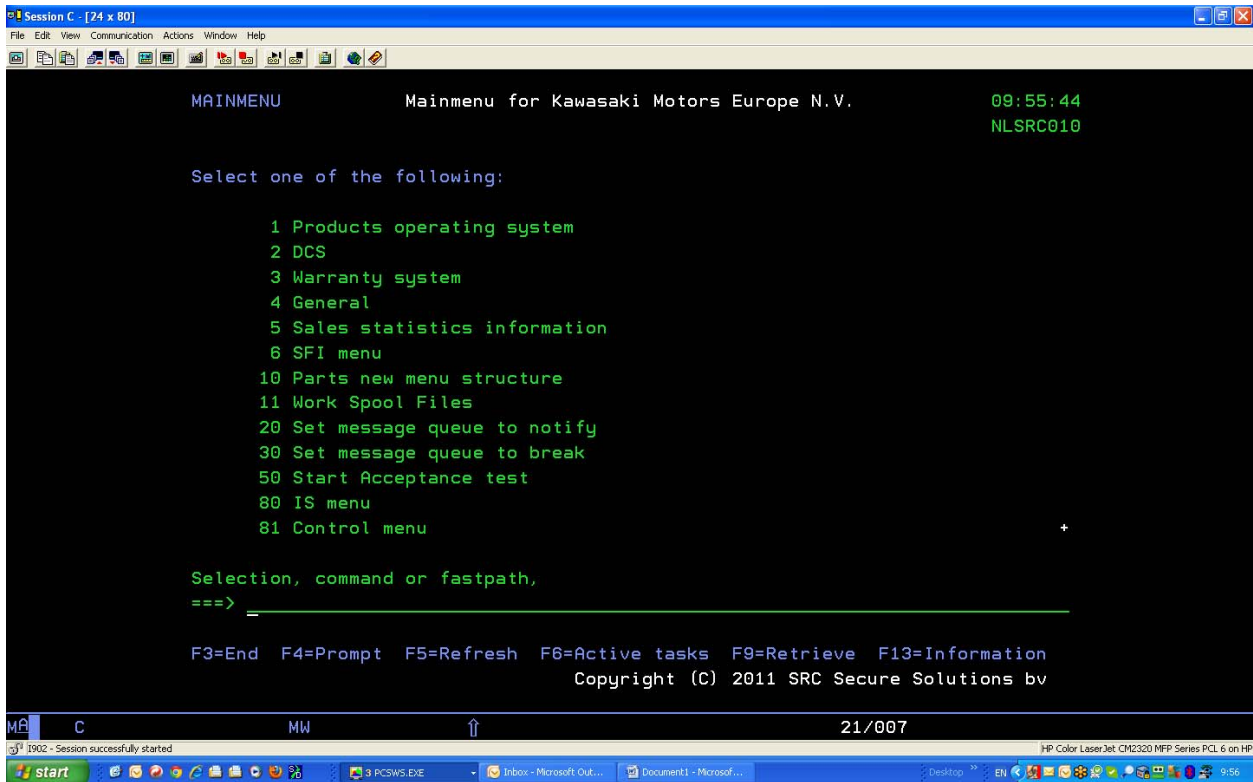
Status of job . . . . . :  ACTIVE
Current user profile . . . . . :  QSECOFR
Job user identity . . . . . :  QSECOFR
Set by . . . . . :  *DEFAULT
Entered system:
Date . . . . . :  04/10/13
Time . . . . . :  09:50:01
Started:
Date . . . . . :  04/10/13
Time . . . . . :  09:50:01
Subsystem . . . . . :  QINTER
Subsystem pool ID . . . . . :  2
Type of job . . . . . :  INTER
Special environment . . . . . :  *NONE
Program return code . . . . . :  1

Press Enter to continue.

F3=Exit  F5=Refresh  F12=Cancel  F16=Job menu

More...
```

So now when TESTUSER4 starts the iMenu400 application, he is 'seen' as QSECOFR with all his rights and access to the application



And his actions are logged:

